

To place BOTTE, GAVITELLO and POD litter bin you will need the following tools:

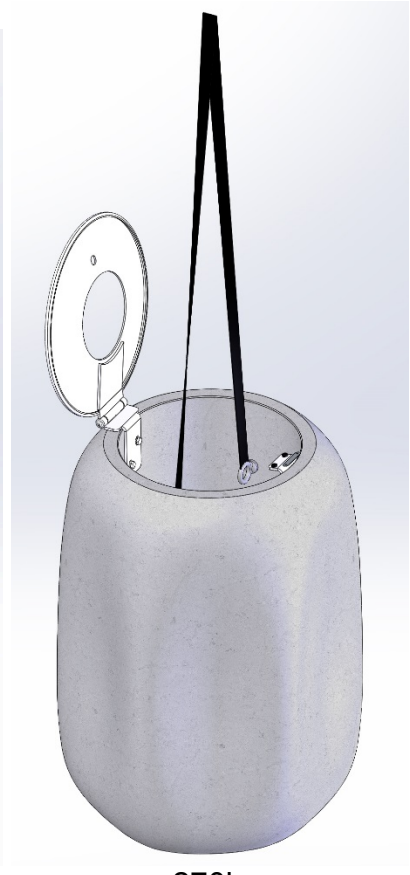
1. Pair of M12 eyebolts (supplied)
2. Flow belt min. 400 kg
3. Lifting equipment (forklift, trucks with mobile arm, crane)



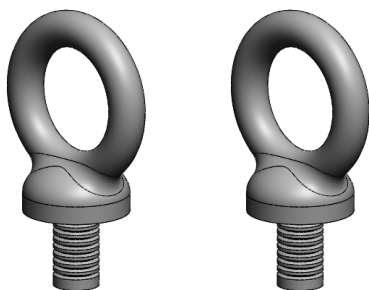
~380kg



~330kg



~270kg



1. Open the cover and take out the trash bag ring.
2. Tighten the two M12 eyebolts in the threaded bushings located inside.
3. Attach the belt to the eyebolts and proceed to lifting, taking care to act in the belt midpoint.
4. Place the basket, remove the eyebolts (to be used as above on any other bins) and close the cover.